

Liberian Student Union in China (LSUIC)

National Secretariat

Second Quarter Report (January – March 2025)

www.lsuic.org | info@lsuic.org

Subtitle

A Report to Members, Veterans, and Stakeholders

Date of Publication

April 4, 2026



Tagline

"Leadership to the People: Building a Digital, Inclusive, and Accountable Union"

Motto

"Excellence Through Hard Work"

Contents

Executive Summary 3

1.0 Introduction 4

 1.1 Purpose of the Report..... 4

 1.2 Reporting Period 4

2.0 Quarterly Achievement of Cities..... 4

 2.1 Xuzhou Union of Liberian Students (XULS)..... 4

 2.2 Changsha Union of Liberian Students (CULS)..... 4

 2.8 Huai’an Union of Liberian Students (HULS) 6

 2.9 Jinan Union of Liberian Students (JULS) 7

 2.10 Lishui Union of Liberian Students (LULS) 7

3.0 Taizhou Union of Liberian Students (TULS)..... 7

 3.1 Xi’an Union of Liberian Students (XULS) 8

 3.3 Liberian Student Union in Suzhou (LSUS)..... 8

 3.4 Huzhou Union of Liberian Students (HULS)..... 8

 3.5 Wenzhou Union of Liberian Students (WULS) 8

 3.6 Wuhan Union of Liberian Students (WULS)..... 9

 3.7 Wuhu Union of Liberian Students (WULS)..... 9

 3.8 Xianyang Union of Liberian Students (XULS)..... 9

 3.9 Yichang Union of Liberian Students (YULS)..... 10

 3.10 Zhenjiang Union of Liberian Students (ZULS) 10

 3.10 Nantong Union of Liberian Students (NULS) 10

5.0 National Secretariat Report 10

 5.1. Overview 10

 5.2. Knowledge Sharing and Publications..... 11

5.6 First, Second and Third Quarter (August – March) - Membership Statistics and Analysis 14

Appendices 31

Pictorials from City Activities..... 32

Executive Summary

During the third quarter of the 2025–2026 leadership cycle, the National Secretariat of the Liberian Students Union in China (LSUIC) recorded meaningful progress across key operational areas, particularly in enterprise development, communication, and institutional visibility. Notable advancements were made in promoting student entrepreneurship, with three (3) new union-affiliated businesses registered, increasing the total from eight (8) to eleven (11). This expansion reflects a growing culture of economic empowerment among members, supported by the Secretariat’s structured approach to business registration and ongoing review of additional applications.

In addition to enterprise support, significant emphasis was placed on strengthening communication, branding, and recognition systems across the Union. The Secretariat provided extensive design support to committees and city chapters, producing approximately forty (40) flyers to enhance program visibility and ensure consistency in LSUIC’s brand identity. Complementing this effort was the introduction of the Scholars of the Week initiative, which recognized four (4) individuals for their contributions to the Union’s growth and development. This initiative not only celebrated excellence but also reinforced a culture of motivation, leadership, and active participation among members.

Furthermore, the Secretariat made substantial strides in enhancing digital communication and expanding LSUIC’s online presence. The Union’s Facebook page experienced a significant increase of approximately 1,027 new followers, alongside over 102,000 views, indicating strong audience engagement. On the WeChat Channel, seventeen (17) video updates were published, generating a cumulative viewership of 7,508, while fifty-five (55) videos were uploaded to the YouTube channel to document programs and preserve institutional memory. Despite these achievements, the Secretariat faced operational challenges, including increased workload demands and overlapping responsibilities, which at times affected response efficiency. Nevertheless, the quarter reflects a period of strategic progress and strengthened institutional capacity, laying a solid foundation for sustained growth, improved coordination, and deeper engagement in subsequent periods.

1.0 Introduction

1.1 Purpose of the Report

This report presents a comprehensive account of the major activities, achievements, and operational challenges of the Liberian Students Union in China (LSUIC) during the second phase of the 2025–2026 leadership cycle. It aims to inform members, alumni, and key stakeholders on the Union’s progress in strengthening digital record systems, enhancing communication processes, promoting inclusive governance, and supporting operations across city chapters. Additionally, the report highlights LSUIC’s commitment to transparency, accountable leadership, and sustainable institutional growth, while addressing practical responses to financial and engagement-related constraints.

1.2 Reporting Period

The report covers activities implemented between January and March 2026, a period that represents the concluding phase of Quarter Three and a significant stage in the operationalization of the leadership’s agenda. This timeframe signifies the progression from strategic planning to practical execution, during which various initiatives and improvement measures were deployed. The documented outcomes provide insight into the effectiveness, coordination, and commitment demonstrated throughout the reporting period.

2.0 Quarterly Achievement of Cities

2.1 Xuzhou Union of Liberian Students (XULS)

The Xuzhou Union of Liberian Students (XULS) recorded significant progress between January and March 2026 through key initiatives aimed at strengthening organizational capacity, promoting student welfare, and enhancing unity among members. The Committees Empowerment Initiative, launched on January 31, improved operational efficiency by appointing 11 out of 25 officials to various committees, thereby fostering active student participation and effective service delivery. This was complemented by the February 5 introduction of the Student Loan Initiative, which provided emergency financial support to members at a low 5% interest rate, with three students already benefiting, demonstrating the union’s commitment to student welfare and financial inclusion. Additionally, the “Meet the Gathering” second edition held on March 28 successfully brought together over 60 students, promoting interaction, cultural engagement, and awareness of union activities. Despite challenges such as limited funding, low dues payment, and constitutional breaches, the union has adopted strategic measures including financial contributions from leadership, increased awareness campaigns, and enforcement of constitutional compliance. Moving forward, XULS remains committed to expanding its initiatives, improving student participation, and strengthening institutional support, while recommending greater financial and administrative backing from the national leadership to sustain its impact.

2.2 Changsha Union of Liberian Students (CULS)

The Changsha City leadership has maintained an active membership across Central South University, Central South University of Forestry and Technology, and Changsha University of

Science and Technology, with consistent follow-up on students, including during the winter vacation. From February 10–13, 2026, 22 Liberian students participated in the Yangzhou African Economic and Trade Program. The city is also collaborating with provincial leadership on an approved event scheduled for mid-April 2026. Key challenges include low participation in meetings, poor due payment, dispute resolution issues, and financial constraints affecting many students. To address these, the leadership has introduced flexible due payment plans, planned mental health training, initiated fundraising and collaboration with national leadership, and developed alternative revenue strategies such as sports and dinner events. Cultural orientation programs are also being encouraged to support new members. Moving forward, the leadership aims to strengthen engagement and recommends financial support to improve the effectiveness of its activities.

2.3 Liberian Student Union in Changchun (LSUC)

The Liberian Student Union in Changchun continues to support its members by promoting unity, academic success, and well-being among Liberian students in Jilin Province. Over the past three months, the union held a New Year Party and two successful meetings, where key issues such as student welfare, dues payment, LSUIC activities, business empowerment, healthcare plans, and upcoming events were discussed, along with setting timelines for implementation. Progress has been made through the introduction of a business club session aimed at improving students' skills and providing financial support opportunities, preparation of budgets for the LSUIC convention and Independence Day celebration, and the introduction of a birthday contribution initiative that has been well received. However, challenges remain, including low dues payment, limited participation in union activities, and gaps in leadership skills. To address these, the leadership is revising strategies for the business initiative and continues to encourage active participation and commitment from members to strengthen the union's effectiveness.

2.4 Ningbo Union of Liberian Students (NULS)

During the period under review, the Ningbo City leadership held two online meetings on January 19, 2025, and March 15, 2025, bringing together Liberian students in the city. The leadership identified and integrated two previously unregistered students into the union and its communication platforms. On March 20, 2026, an in-person meeting and dinner were organized to celebrate Ramadan, promoting inclusivity among members. Some progress was also made in dues collection, and the city president actively participated in provincial meetings and worked to establish connections with neighboring Shaoxing city. However, key challenges remain, including low dues compliance, only three out of seven students are in good standing, one has partially paid, and three have not paid, and poor meeting attendance, which affects decision-making and engagement. To address these issues, the leadership plans to improve communication through multiple channels, encourage participation by emphasizing the benefits of meetings, and strengthen dues collection through increased awareness and transparency.

2.5 Dalian Union of Liberian Students (DULS)

The Dalian City leadership was established following the appointment of the city president on January 19, 2026, and confirmation on February 9, 2026, after identifying key challenges faced by Liberian students in the city. Since then, the main focus has been collaborating with the International Office of Dalian Maple Leaf College of Technology to support incoming students, particularly in areas such as airport pickup, bank card registration, SIM card acquisition, medical checks, and residence permits, all of which are now being effectively handled for students. Currently, there are 13 Liberian students in the institution. However, challenges persist, including exploitation of students by agents, low union registration, and poor dues payment. To address these, it is recommended that national leadership engage agents over reported issues, while the city leadership continues to encourage student participation, registration, and financial compliance, alongside maintaining active engagement with members.

2.6 Guiyang Union of Liberian Students (GULS)

Guiyang leadership established a sub-leadership system across universities, improving communication and enabling faster monitoring of student welfare and academic progress during the quarter, the. Academic support was strengthened through organized HSK 4 preparation classes using peer tutoring and shared study resources, with over 20 students actively preparing and showing progress. Despite this, challenges remain, particularly language barriers affecting academic performance, limited university support, and difficulty adapting to the academic environment. To address these, students are encouraged to use language tools, engage in peer tutoring, and build support networks, while financial discipline and community support systems are promoted to manage dues and expenses. Looking ahead, the focus will be on strengthening academic support, promoting mentorship, encouraging financial responsibility, and exploring small business opportunities, while also organizing academic and social events to support student development and unity.

2.7 Hangzhou Union of Liberian Students (HULS)

Throughout the quarter under review, the Hangzhou City leadership did not implement any major programs, although plans for a campus tour were not carried out due to lack of student cooperation. The leadership held several meetings focused on encouraging dues payment, consistently sharing membership links and QR codes, and recently saw improved attendance in the last two meetings. Plans are underway to host a welcome program in April for new students, and there is consideration to introduce a dedicated Zoom platform to improve meeting participation. However, challenges remain, including low interest and participation in union activities, with some students openly disengaged. Moving forward, the leadership aims to implement strategies to increase student interest and involvement in both city and provincial activities.

2.8 Huai'an Union of Liberian Students (HULS)

From January to March, the Huai'an Union of Liberian Students (HULS) focused on student welfare, safety, and administrative coordination, including organizing winter vacation travel, conducting regular well-being check-ins, and maintaining daily operations. Key challenges included health

issues caused by weather changes and financial constraints that affected the timely payment of LSUIC dues. In response, the leadership has planned upcoming initiatives such as a campus tour, a combined year-end program featuring graduation and awards, and the establishment of a city electoral committee to oversee elections. To support these efforts, the city recommends timely approval of its operational budget and flexibility regarding outstanding dues, while continuing to work toward improving financial compliance and overall student engagement.

2.9 Jinan Union of Liberian Students (JULS)

Jinan Union of Liberian Students (JULS) recorded limited activities despite earlier plans, as key programs such as the Birth Month Rally fundraiser and the “Giving Back to the Community” initiative were not successfully implemented due to low participation and logistical challenges. However, progress was made in February with the successful hosting of an educational workshop for leaders and emerging student leaders, as well as active participation in a national planning meeting with LSUIC regarding the annual conference scheduled for July 26, 2026, in Jinan. The leadership also continued to encourage membership registration and dues payment. Major challenges included limited funding, low student participation, scheduling conflicts due to academic commitments, inactive digital engagement, and difficulties with dues payment. Moving forward, the leadership plans to implement strategies to improve participation, strengthen financial contributions, and enhance overall union engagement.

2.10 Lishui Union of Liberian Students (LULS)

Within the quarterly reporting period, two meetings were held focusing on planning, communication, and union awareness. Key discussions included resolving internal misunderstandings, setting the yearly agenda, promoting unity, and educating members on LSUIC and dues payment. Progress was made in addressing conflicts and improving participation, although some plans were delayed due to Ramadan. Moving forward, the leadership aims to strengthen engagement by inviting officials to further educate members and improve meeting productivity.

3.0 Taizhou Union of Liberian Students (TULS)

LSUIC Taizhou City Chapter maintained consistent operations through regular online meetings and a physical meeting at Jiaojiang Campus, alongside an official visit to Linhai Campus to strengthen inclusivity and engagement across members during the third quarter. The leadership also prioritized administrative efficiency by ensuring all students completed membership registration and continued to promote academic focus and responsible financial management among members. Despite these efforts, challenges remain in areas such as financial compliance and consistent participation. Looking ahead, the chapter is focusing on preparations for the Zhejiang Province Conference and the National Conference in Jinan, supporting fundraising initiatives to sponsor delegates, and encouraging members to settle outstanding dues to improve financial sustainability and strengthen overall union effectiveness.

3.1 Xi'an Union of Liberian Students (XULS)

From January–March 2026, the Xi'an City leadership remained active despite the vacation period, focusing on student support rather than large-scale activities. Key efforts included providing visa renewal assistance, where all affected students were successfully guided through the process without academic disruption. Plans were also made for a back-to-school sports event on March 28 to promote engagement and student well-being. While activity levels were reduced due to students traveling, the quarter highlighted the need for flexible planning. Moving forward, the leadership aims to increase membership registration, organize outdoor activities, support graduating students, and encourage participation in the upcoming national conference.

3.3 Liberian Student Union in Suzhou (LSUS)

Throughout the period under review (January - March 2026), the Liberian Student Union in Suzhou focused on strengthening organization, student welfare, and financial management through regular meetings, improved committee reporting, and progress on the Union Constitution. Key achievements included the introduction of Chinese tutorial classes, mental health and fitness initiatives, active participation in a provincial debate competition, and maintaining financial stability with no debt and regular reporting. However, challenges such as low dues payment, limited participation, communication gaps, and delays in implementation were identified. To address these, the Union proposed improving transparency, increasing member engagement, strengthening communication, and finalizing administrative structures. Moving forward, the Union plans to implement programs such as graduation recognition, elections, expanded welfare and academic support, while continuing to promote unity and accountability among members. image of LSUIC, while seeking enhanced national support and improved communication frameworks.

3.4 Huzhou Union of Liberian Students (HULS)

Huzhou City leadership focused on maintaining communication, member welfare, and preparation for the upcoming National Conference. Several online meetings were held to check on members, encourage dues payment, and discuss plans for conference participation, including transportation and expenses during the third quarter. The leadership also planned a fundraising cookout for the fourth quarter to support members attending the conference and promote unity. Despite operating mostly online, the chapter-maintained engagement and made progress in organizing future activities and strengthening member coordination.

3.5 Wenzhou Union of Liberian Students (WULS)

The third quarter (January–March 2026), the Wenzhou City Liberian Student Union maintained basic administrative activities, including participation in leadership meetings, sharing national union information, and encouraging dues payment among members, although consistency remains a challenge. The leadership also addressed and resolved an internal dispute through dialogue, helping to maintain unity. Some engagement was made with LSUIC through sharing information and inviting scholars to participate. Preparations were initiated for the upcoming African Union program, including collaboration with other African student groups and forming teams for participation. However, challenges such as lack of a suitable venue and scheduling conflicts limited full

engagement. Overall, the quarter involved moderate progress in maintaining operations, communication, and preparation for upcoming activities.

3.6 Wuhan Union of Liberian Students (WULS)

The Wuhan Union of Liberian Students (WULS) recorded moderate progress during the quarter despite limited activities due to the winter break, with key efforts focused on preparation and student support. Notable achievements included the early preparation for the Wuhan AFCON with training sessions involving over 25 students, the holding of two leadership meetings and one general meeting to discuss plans and student concerns, and continued campus visitation where new students were identified and integrated. However, challenges such as financial constraints, low dues payment, sustainability issues, and adjustment difficulties for new students persisted. To address these, the leadership provided support with financial transactions, basic needs like bedding, and informal financial assistance among members. Moving forward, the union aims to strengthen unity, increase student participation, improve engagement through hybrid activities, and enhance collaboration while continuing to address financial and welfare challenges.

3.7 Wuhu Union of Liberian Students (WULS)

The Wuhu City chapter maintained basic operations and student support throughout the third quarter of 2026, with leadership remaining active and encouraging participation despite a small membership of five students. Key efforts included assisting students with academic matters such as checking grades and resolving administrative issues like student card replacement. However, challenges persisted, including documentation issues affecting registration, low student population, financial constraints, and language barriers. To address these, the leadership is encouraging dues payment, promoting active engagement, and working to resolve documentation concerns while advocating for increased student intake. Moving forward, the chapter aims to strengthen welfare activities, support new students, and enhance participation, while recommending closer engagement from national leadership to support its growth.

3.8 Xianyang Union of Liberian Students (XULS)

The Xianyang City leadership recorded steady progress during the third quarter through consistent student engagement, promotion of unity, and maintenance of peace among members, with minimal internal conflicts. Coordination with provincial leadership remained active, and preparations were made for the Back-to-School Football and Kickball Games scheduled for March 28, 2026. However, challenges such as low dues payment and financial constraints affected some planned activities. To address these, the leadership intensified awareness efforts on dues compliance, promoted participation through social and sports activities, and maintained collaboration with provincial leadership. Moving forward, the focus is on strengthening unity, expanding support programs, sustaining peace, and successfully implementing planned events, while recommending improved dues enforcement, increased awareness, and continued institutional support.

3.9 Yichang Union of Liberian Students (YULS)

The Yichang City leadership maintained regular operations during the reporting period, focusing on student welfare, unity, and administrative coordination among its 14 members. Key activities included consistent meetings, support for students facing academic and personal challenges, and mediation to resolve issues, alongside a successful Dinner Night held on December 13, 2025, which strengthened unity and engagement. Despite these efforts, challenges such as lack of dues payment, limited finances, and inconsistent participation persist. The leadership continues to encourage financial compliance and active involvement while maintaining good relations with university authorities and other student communities. Moving forward, the focus is on improving participation, strengthening financial accountability, expanding welfare support, and enhancing collaboration, with recommendations for increased national support, leadership training, and better systems to enforce dues compliance.

3.10 Zhenjiang Union of Liberian Students (ZULS)

The Zhenjiang City chapter recorded steady progress during the third quarter, focusing on academic support, welfare, and organizational improvement. Key achievements included the launch of the “Academic Bridge” mentorship program, which improved student academic performance, hosting a cultural “Liberian Get Together Day” to strengthen community presence, and providing timely welfare support for a member in need. Administrative improvements were also made through the digitization of records. However, challenges such as limited funding, communication gaps, academic pressure, and internal cohesion among members persist. To address these, the leadership plans to implement fundraising initiatives, improve communication through smaller group channels, introduce mental health support programs, and strengthen mentorship structures. Moving forward, the chapter aims to promote academic excellence, organize key events such as Independence Day celebrations, support leadership transition, and build stronger alumni connections.

3.10 Nantong Union of Liberian Students (NULS)

During the third quarter, activities were primarily focused on academic reintegration, internal coordination, and student welfare monitoring following the return from the year-end break. The leadership maintained active communication, engaged in planning discussions, and kept open channels to address student concerns, including a formal complaint regarding scholarship and financial policies at Nantong University, which was escalated for intervention. However, the chapter faced notable challenges, including slow post-vacation transition, limited program implementation, financial constraints, reduced student engagement, and ongoing uncertainty surrounding scholarship policies, all of which impacted overall operations during the period.

5.0 National Secretariat Report

5.1. Overview

The third quarter was marked by sustained efforts to enhance continuous visibility across the Union. Throughout the period, strategic initiatives were undertaken to advance media outreach and strengthen communication systems, ensuring more timely, consistent, and effective dissemination of information. Thoughtful steps were also taken to improve the Union’s digital presence and

streamline internal communication channels, thereby promoting greater accessibility and transparency. Engagement was further deepened through increased interaction with members in fostering inclusiveness, collaboration, and a stronger sense of unity. At the same time, operational coordination was significantly improved both within LSUIC and with external partners, enabling more efficient execution of activities and better alignment of institutional objectives. Collectively, these efforts contributed to enhanced efficiency, increased visibility, and strengthened institutional effectiveness, positioning the Union for continued growth and impact.

5.2. Knowledge Sharing and Publications

During the third quarter, the Secretariat strengthened its communication and engagement drive through a series of targeted outputs and initiatives. A total of nine newsletters (Volume 1, Numbers 6 to 14) were published during the quarter, providing timely updates and ensuring a consistent flow of information across the Union. Complementing this, the LSUIC Chronicle, Volume 1, Numbers 4 and 5, was successfully released as a more comprehensive publication, documenting key national and city-level activities, leadership initiatives, and student engagements. While the newsletters focused on regular communication and updates, the Chronicle served as the Union’s official historical record, reinforcing communication, institutional memory, and accountability. The quarter also featured notable intellectual and administrative engagements, including the hosting of Luminary 2.0 by the National Secretariat. Alongside these, three important meetings were convened at the of the National Secretariat to strengthen coordination, decision-making, and strategic alignment. These combined efforts contributed to stronger engagement, improved communication structures, and more effective coordination both within LSUIC and with external stakeholders.



5.3 Business Registration and Enterprise Support

During the quarter, the Secretariat recorded notable progress in promoting student entrepreneurship through the expansion of union-affiliated businesses. A total of three (3) new businesses were registered, increasing the number of officially recognized union-affiliated enterprises from eight (8) to eleven (11). In addition, several new applications were received and are currently undergoing screening, pending final approval. This growth underscores the Secretariat's continued commitment to empowering students economically and fostering a supportive environment for entrepreneurial development within the Union.

5.4 Design Support and Scholars Recognition

Throughout the quarter, the National Secretariat provided extensive design support to committees and city chapters, producing approximately forty (40) flyers to facilitate communication, promote activities, and ensure consistency in branding across the Union. This effort played a critical role in maintaining a unified and professional LSUIC identity, while also strengthening the visibility of programs and initiatives at both national and city levels. The Secretariat's proactive approach to design support ensured that all engagements were effectively publicized and aligned with the Union's standard communication and branding guidelines.

In addition, the Secretariat successfully launched the Scholars of the Week initiative, aimed at recognizing individuals who have made meaningful contributions to the overall growth and development of LSUIC. This recognition platform serves to motivate excellence, highlight leadership, and celebrate academic and service-oriented achievements within the Union. Since its launch, four (4) scholars have been recognized, marking an important step toward fostering a culture of appreciation, inspiration, and continuous contribution among members.

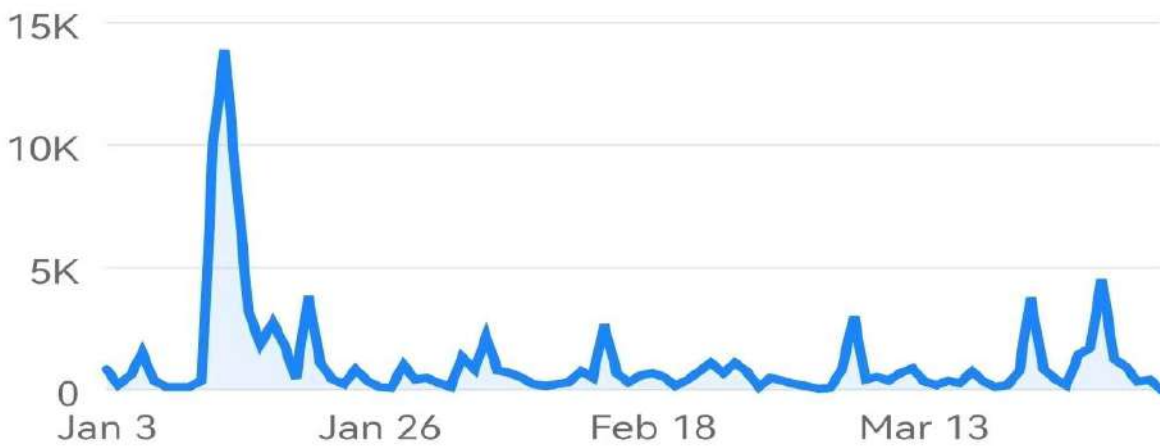
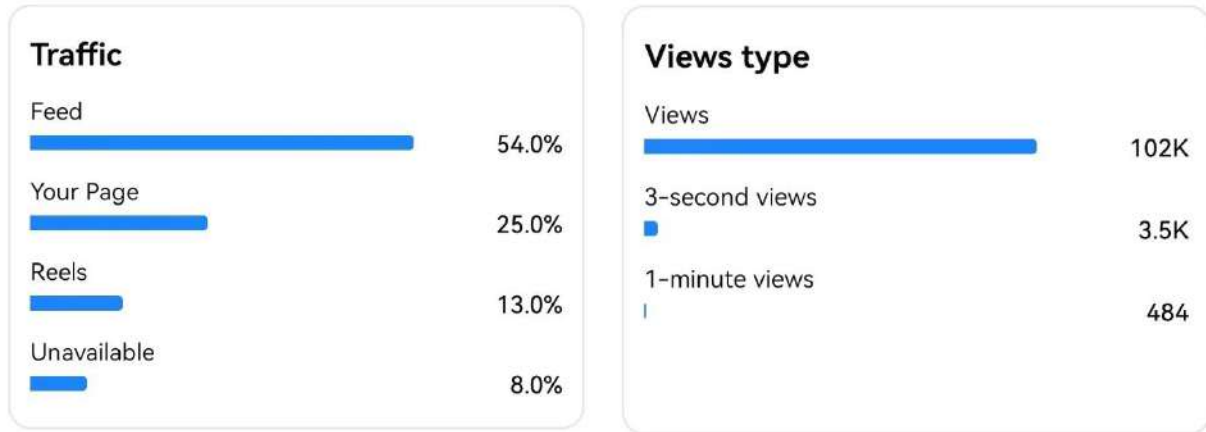
5.5 Communication and Digital Visibility

During the reporting period, the National Secretariat made significant strides in strengthening LSUIC's communication framework and expanding its digital visibility across multiple platforms. From July of the previous year to date, the Union's Facebook page recorded a substantial increase of approximately 1,027 new followers, reflecting growing interest and engagement with LSUIC activities. Audience traffic was primarily driven through the Feed (54.0%), followed by direct visits to the page (25.0%), Reels (13.0%), and other sources (8.0%). In addition, the page achieved an impressive reach of over 102,000 views, demonstrating the effectiveness of the Secretariat's digital communication strategies.

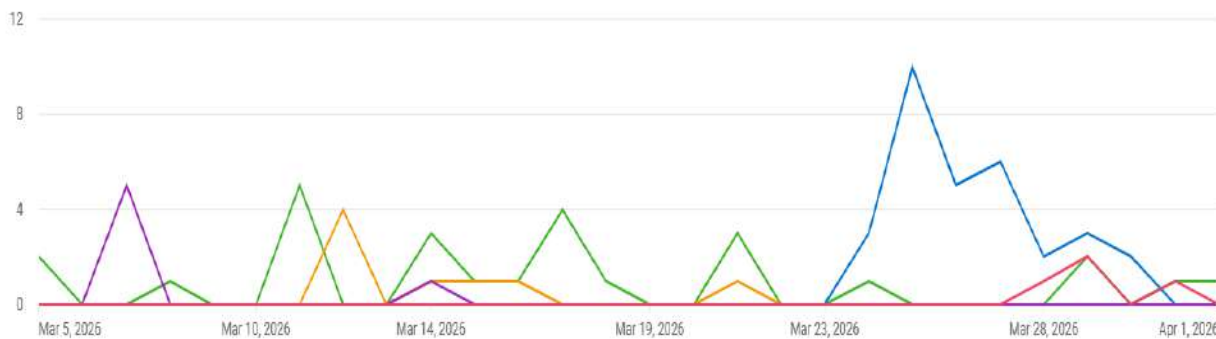
On the WeChat Channel, the Secretariat successfully uploaded seventeen (17) video updates, generating a cumulative viewership of 7,508. Furthermore, in a continued effort to expand the Union's reach and systematically document its institutional memory, a total of fifty-five (55) videos covering various programs and activities were uploaded to the LSUIC YouTube channel. Collectively, these efforts highlight the Secretariat's commitment to leveraging digital platforms to

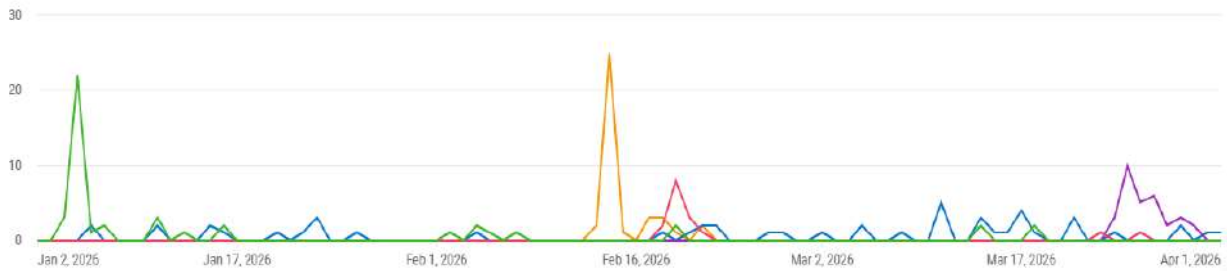
enhance visibility, improve communication, and preserve the Union’s activities for broader engagement and future reference.

Facebook Views Trend



YouTube Channel View Trend



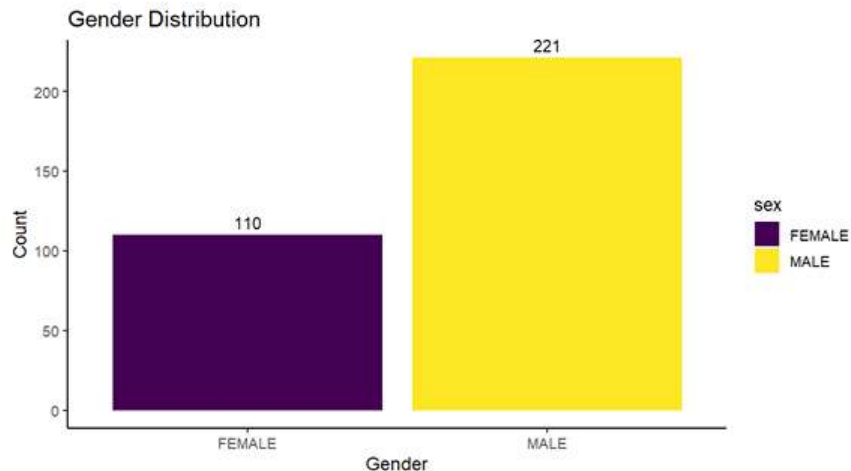


5.6 First, Second and Third Quarter (August – March) - Membership Statistics and Analysis SUMMARY ANALYSIS

Total Members Registration/Update for the 1st ,2nd & 3rd Quarters:	331
Average Age:	27.4 years
Gender Distribution:	Male: 221 (66.8%) - Female: 110 (33.2%)
Most Popular Major: COMPUTER SCIENCE AND TECHNOLOGY:	42 Students
Most Represented County:	MONTERRADO-110 Students
University with The Most Registered Members in the Third Quarter: SUZHOU UNIVERSITY OF SCIENCE AND TECHNOLOGY	25 Students
Estimated Completion Rate (for graduation):	18.4%

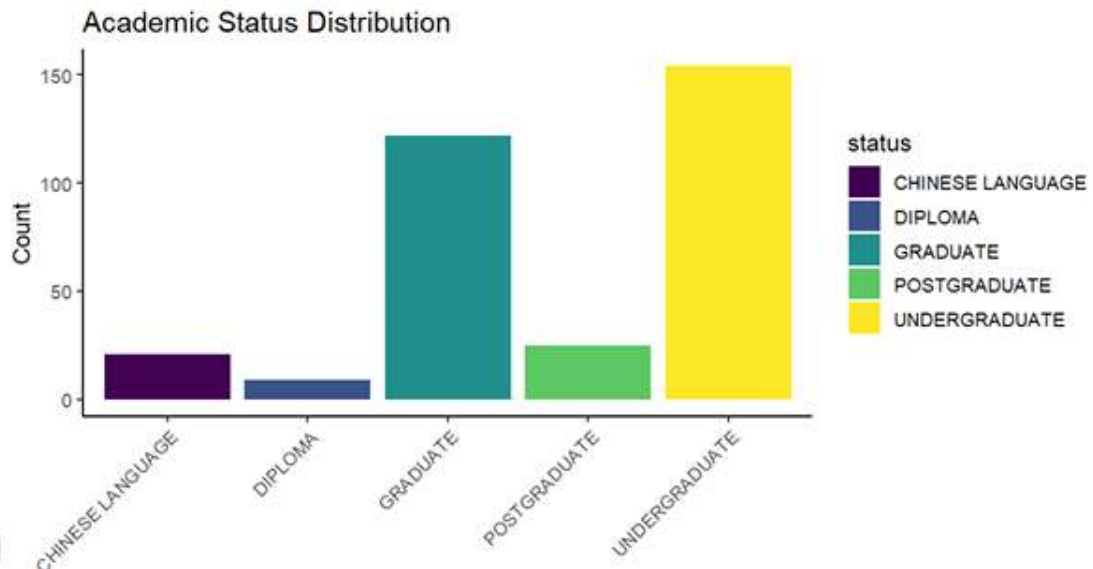
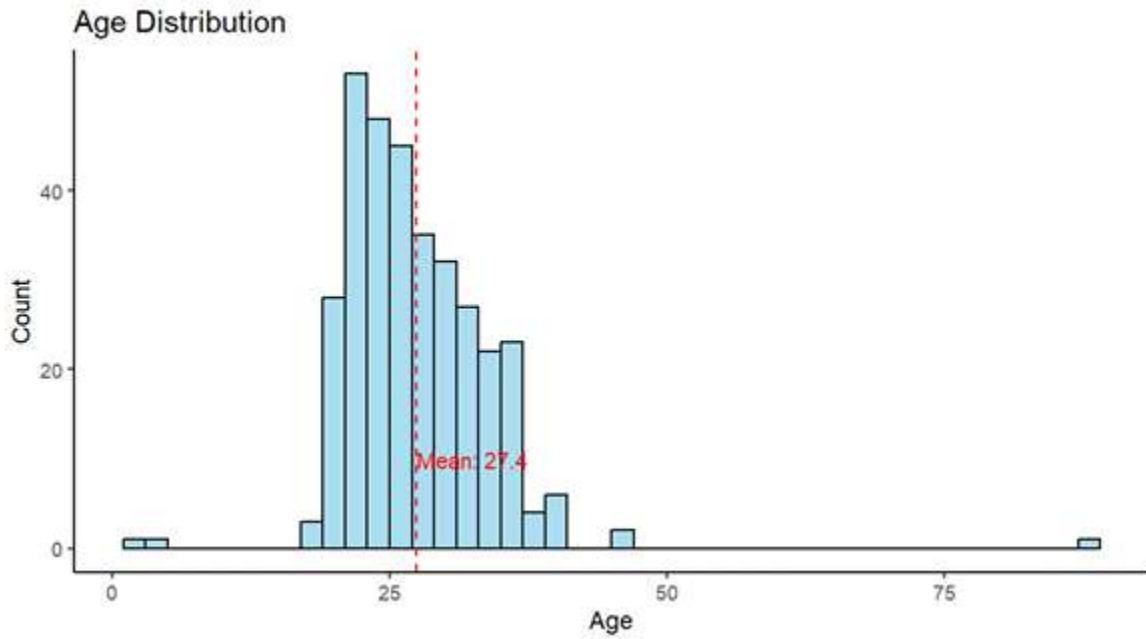
DEMOGRAPHIC ANALYSIS GENDER DISTRIBUTION

Gender	Count	Percentage
FEMALE	110	33.2
MALE	221	66.8



AGE DISTRIBUTION

Mean_Age	Median_Age	Min_Age	Max_Age	Sd_Age
27.39588	26.40931	1.141684	88.25188	6.598304

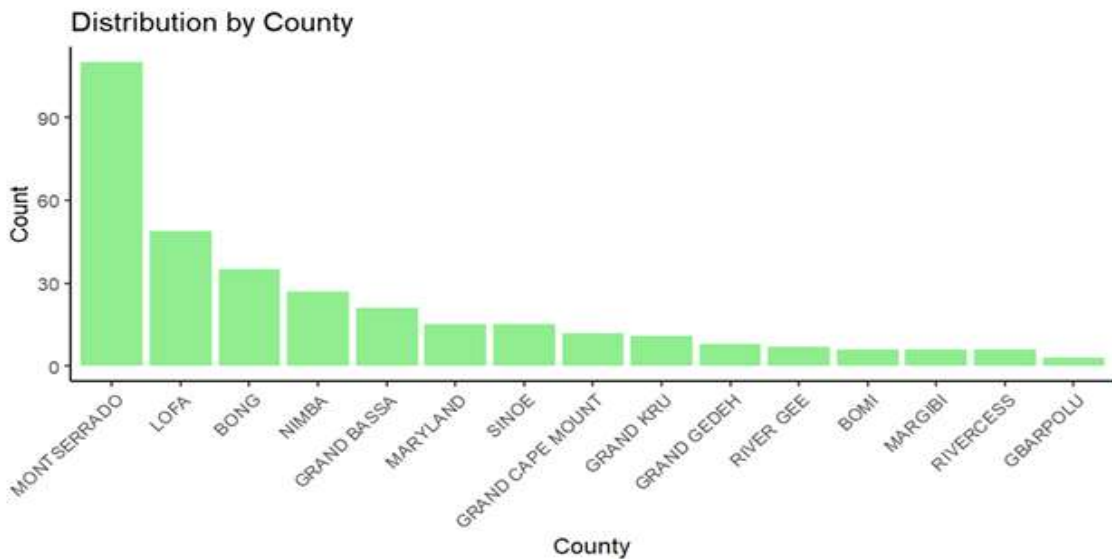


**ACADEMIC PROFILE ANALYSIS
STATUS SUMMARY**

Status	Count	Percentage
CHINESE LANGUAGE	21	6.344410876
DIPLOMA	9	2.719033233
GRADUATE	122	36.85800604
POSTGRADUATE	25	7.552870091
UNDERGRADUATE	154	46.52567976

COUNTY DISTRIBUTION

County	Count	Percentage
MONTERRADO	110	33.2326284
LOFA	49	14.80362538
BONG	35	10.57401813
NIMBA	27	8.157099698
GRAND BASSA	21	6.344410876
MARYLAND	15	4.531722054
SINOE	15	4.531722054
GRAND CAPE MOUNT	12	3.625377644
GRAND KRU	11	3.32326284
GRAND GEDEH	8	2.416918429
RIVER GEE	7	2.114803625
BOMI	6	1.812688822
MARGIBI	6	1.812688822
RIVERCESS	6	1.812688822
GBARPOLU	3	0.906344411



MAJOR DISTRIBUTION

Major	Count
COMPUTER SCIENCE AND TECHNOLOGY	42
INTERNATIONAL ECONOMICS AND TRADE	42
ENVIRONMENTAL SCIENCE AND ENGINEERING	33
BUSINESS ADMINISTRATION	14
CHINESE LANGUAGE	14
CIVIL ENGINEERING	13
COMPUTER SOFTWARE ENGINEERING	12
PUBLIC HEALTH	11
MATERIALS SCIENCE AND ENGINEERING	8
NURSING	8
BIOTECHNOLOGY	7
AI AND BIG DATA TECHNOLOGY	6
MANAGEMENT SCIENCE AND ENGINEERING	6
MBA	5
MECHANICAL ENGINEERING	5
PUBLIC ADMINISTRATION	5
CHEMICAL ENGINEERING AND TECHNOLOGY	4
CLINICAL MEDICINE	4
ELECTRICAL ENGINEERING	4
INFORMATION AND COMMUNICATION ENGINEERING	4
PHARMACY	4
ACCOUNTING	3
APPLIED ECONOMICS	3
ECONOMICS	3
FINANCE	3
MEDICINAL CHEMISTRY	3
AGRICULTURAL SCIENCE AND ENGINEERING	2
ARCHITECTURE	2
AUDITING	2
INDUSTRIAL ECONOMICS	2
LOGISTICS MANAGEMENT	2
MICROBIOLOGY	2
MINING ENGINEERING	2
PETROLEUM ENGINEERING	2
PUBLIC POLICY RULE OF LAW	2
RESOURCE UTILIZATION AND PLANT PROTECTION	2
TRAFFIC AND TRANSPORTATION ENGINEERING	2
ANALYTICAL CHEMISTRY	1
ANIMAL MEDICAL SCIENCE	1
AQUATIC SCIENCE	1
BIOCHEMISTRY	1

BIOLOGY	1
CHEMICAL BIOLOGY	1
CHEMISTRY	1
CHILD ADOLESCENT AND MATERNAL HEALTH CARE	1
COMPARATIVE EDUCATION	1
CONSTRUCTION ENGINEERING TECHNOLOGY	1
CROSS BORDER E COMMERCE	1
CYBERSPACE SECURITY	1
DEMOGRAPHY	1
E COMMERCE	1
ELECTRONIC COMMERCE	1
ENERGY AND POWER ENGINEERING	1
ENGINEERING PROJECT MANAGEMENT	1
FISHERY DEVELOPMENT	1
FOOD SCIENCE AND ENGINEERING	1
FOREST SCIENCE	1
GEOTECHNICAL	1
HEALTHCARE MANAGEMENT	1
IET	1
INTELLIGENT MANUFACTURING	1
JOURNALISM AND INFORMATION COMMUNICATION	1
MARINE SCIENCE	1
MARKETING	1
MASTER IN BUSINESS ADMINISTRATION MBA	1
MASTER INTERNATIONAL BUSINESS	1
MBBS	1
MECHATRONIC ENGINEERING	1
MEDICAL BIOCHEMISTRY AND MOLECULAR BIOLOGY	1
MPA	1
NEW ENERGY SCIENCE AND ENGINEERING	1
RAILWAY TRANSPORTATION ENGINEERING	1
RESOURCE AND ENVIRONMENTAL ENGINEERING	1
RURAL AND URBAN PLANNING	1
SUPPLY CHAIN MANAGEMENT	1
TEXTILE ENGINEERING	1
TRANSPORT ECONOMICS AND LOGISTICS	1
VEHICLE ENGINEERING	1
WATER AND SOIL CONSERVATION AND DESERTIFICATION CONTROL	1
WOOD SCIENCE AND ENGINEERING	1

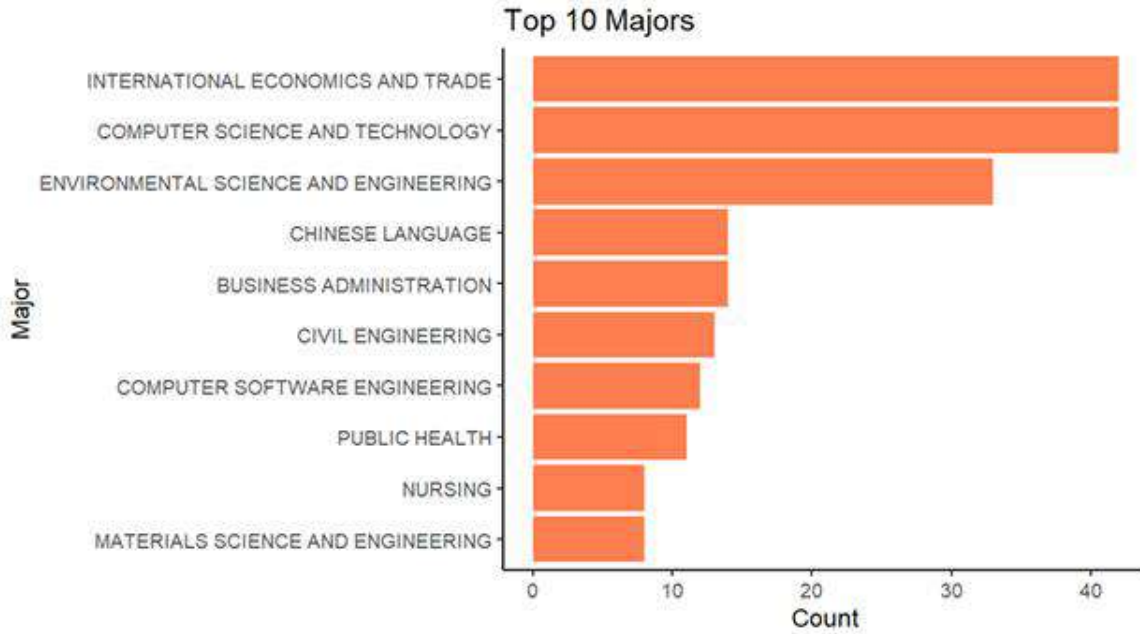
University Distribution

University	Count
SUZHOU UNIVERSITY OF SCIENCE AND TECHNOLOGY	25
JIANGSU NORMAL UNIVERSITY	12
HUNAN UNIVERSITY OF TECHNOLOGY	10
CHANGAN UNIVERSITY	9
CHINA UNIVERSITY OF PETROLEUM	9
NANTONG UNIVERSITY	9
CENTRAL SOUTH UNIVERSITY	8
JIANGXI UNIVERSITY OF SCIENCE AND TECHNOLOGY	7
SHANGHAI UNIVERSITY OF ENGINEERING SCIENCE	7
GUIZHOU INSTITUTE TECHNOLOGY	6
ZHEJIANG NORMAL UNIVERSITY	6
GUIZHOU UNIVERSITY	5
HOHAI UNIVERSITY	5
CHINA THREE GORGES UNIVERSITY	4
HARBIN INSTITUTE OF TECHNOLOGY	4
JIANGSU UNIVERSITY	4
NANTONG VOCATIONAL UNIVERSITY	4
SHANDONG JIANZHU UNIVERSITY	4
SICHUAN UNIVERSITY OF CULTURE AND ARTS	4
SOUTHERN MEDICAL UNIVERSITY	4
TAIZHOU UNIVERSITY	4
UNIVERSITY OF SOUTH CHINA	4
WENZHOU UNIVERSITY	4
WUHAN TEXTILE UNIVERSITY	4
WUHAN UNIVERSITY	4
XUZHOU UNIVERSITY OF TECHNOLOGY	4
DALIAN MAPLE LEAF UNIVERSITY OF TECHNOLOGY	3
GUIZHOU NORMAL UNIVERSITY	3
JIANGSU UNIVERSITY OF SCIENCE AND TECHNOLOGY	3
NANJING INSTITUTE OF TECHNOLOGY	3
NORTH CHINA UNIVERSITY OF TECHNOLOGY	3
SHANDONG UNIVERSITY OF FINANCE AND ECONOMICS	3
SHANGHAI LIXIN UNIVERSITY OF ACCOUNTING AND FINANCE	3
SHANGHAI UNIVERSITY	3
TONGJI UNIVERSITY	3
XUZHOU INSTITUTE OF TECHNOLOGY	3
XUZHOU MEDICAL UNIVERSITY	3
YANGTZE UNIVERSITY	3
ZHEJIANG SCI TECH UNIVERSITY	3
ZHENGZHOU UNIVERSITY	3
ANHUI POLYTECHNIC UNIVERSITY	2

CENTRAL CHINA NORMAL UNIVERSITY	2
CENTRAL SOUTH UNIVERSITY OF FORESTRY AND TECHNOLOGY	2
CHANGCHUN UNIVERSITY OF SCIENCE AND TECHNOLOGY	2
CHINA PHARMACEUTICAL UNIVERSITY	2
CHINA WEST NORMAL UNIVERSITY	2
EAST CHINA UNIVERSITY OF SCIENCE AND TECHNOLOGY	2
HITSZ	2
HUAIYIN INSTITUTE OF TECHNOLOGY	2
HUAZHONG UNIVERSITY OF SCIENCE AND TECHNOLOGY	2
HUZHOU NORMAL UNIVERSITY	2
JIAXING UNIVERSITY	2
JINZHOU MEDICAL UNIVERSITY	2
LIAONING UNIVERSITY OF TECHNOLOGY	2
LISHUI UNIVERSITY	2
NANJING AUDIT UNIVERSITY	2
NANJING UNIVERSITY OF INFORMATION SCIENCE AND TECHNOLOGY	2
NINGBO UNIVERSITY	2
NORTH CHINA UNIVERSITY OF WATER RESOURCE AND ELECTRIC POWER	2
NORTHEAST FORESTRY UNIVERSITY	2
UNIVERSITY OF INTERNATIONAL BUSINESS AND ECONOMICS	2
XIANYANG NORMAL UNIVERSITY	2
ZHONGNAN UNIVERSITY OF ECONOMICS AND LAW	2
ANHUI AGRICULTURAL UNIVERSITY	1
ASIA UNIVERSITY	1
BEIJING JIOATONG UNIVERSITY	1
BEIJING NORMAL UNIVERSITY	1
BEIJING TECHNOLOGY AND BUSINESS UNIVERSITY	1
BEIJING UNIVERSITY OF CHEMICAL TECHNOLOGY	1
BEIJING WUZI UNIVERSITY	1
CHD	1
CHENGDU NORMAL UNIVERSITY	1
CHENGDU UNIVERSITY OF TECHNOLOGY	1
CHINA AGRICULTURAL UNIVERSITY	1
CHINA SHANGHAI COOPERATION UNIVERSITY	1
CHINA UNIVERSITIES	1
CHINA UNIVERSITY OF PETROLEUM EAST CHINA	1
CHINA UNIVERSITY OF PETROLEUM HUADONG	1
CHONGQING INSTITUTE OF FOREIGN STUDIES	1
EXCHANGE CENTER OF XINYU UNIVERSITY	1
FOSHAN UNIVERSITY	1
FUZHOU UNIVERSITY OF INTERNATIONAL STUDIES AND TRADE	1
GUANGDONG WOMEN POLYTECHNIC	1
HANGZHOU NORMAL UNIVERSITY	1
HEILONGJIANG UNIVERSITY	1

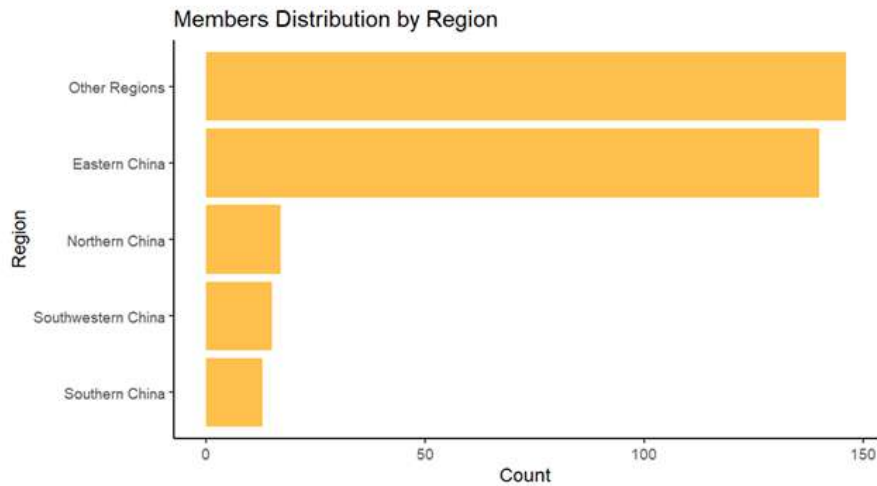
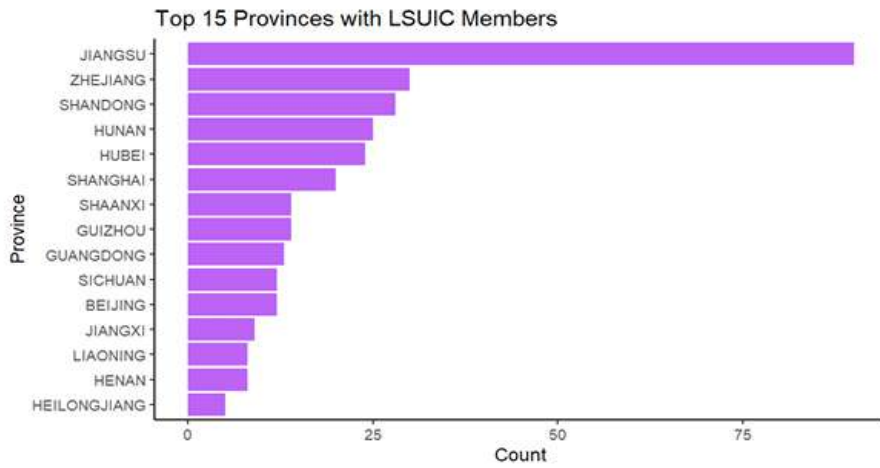
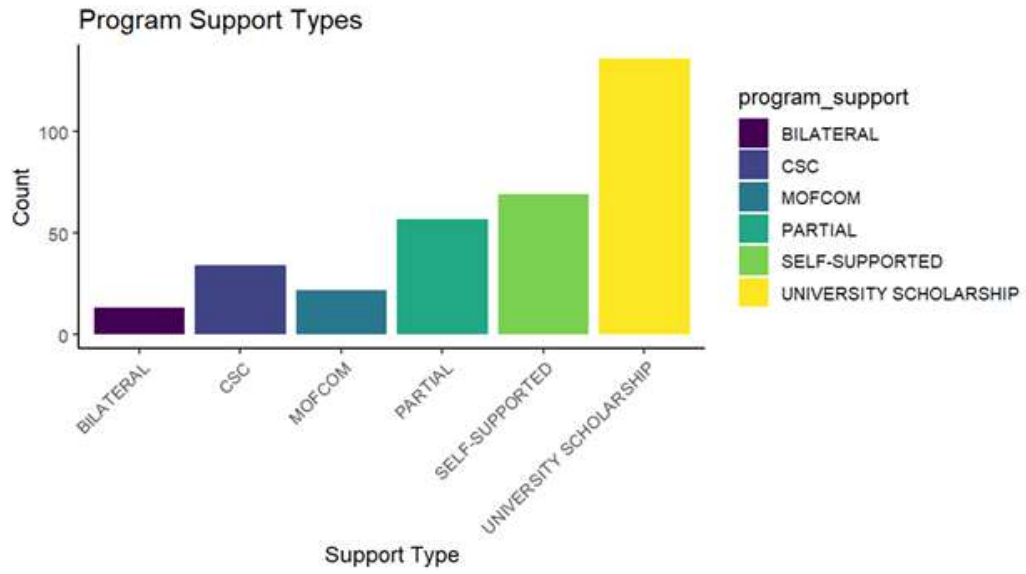
HENAN UNIVERSITY OF SCIENCE AND TECHNOLOGY	1
HENAN UNIVERSITY OF TECHNOLOGY	1
HUAIYIN NORMAL UNIVERSITY	1
HUBEI UNIVERSITY OF TECHNOLOGY	1
JIANGNAN UNIVERSITY	1
JIANGSU VOCATIONAL COLLEGE OF MEDICINE	1
JIANGXI SCIENCE AND TECHNOLOGY NORMAL UNIVERSITY	1
JINGCHU UNIVERSITY OF TECHNOLOGY	1
JINING UNIVERSITY	1
LIAONING PETROCHEMICAL UNIVERSITY	1
LINYI UNIVERSITY	1
NANCHANG HANGKONG UNIVERSITY	1
NANJIN FORESTRY UNIVERSITY	1
NANJING AGRICULTURAL UNIVERSITY	1
NANJING FORESTRY UNIVERSITY	1
NANJING UNIVERSITY OF INDUSTRY TECHNOLOGY	1
NANKAI UNIVERSITY	1
NINGBO INSTITUTE OF TECHNOLOGY	1
NINGBOTECH UNIVERSITY	1
NORTH CHINA ELECTRIC POWER UNIVERSITY	1
NORTH HENAN MEDICAL UNIVERSITY	1
NORTHEAST FORESTRY UNIVERSITY NEFU	1
NORTHEAST NORMAL UNIVERSITY	1
OCEAN UNIVERSITY OF CHINA	1
QINGDAO UNIVERSITY OF SCIENCE AND TECHNOLOGY	1
QUFU NORMAL UNIVERSITY	1
SHANDONG FIRST MEDICAL UNIVERSITY	1
SHANDONG JIANZSU UNIVERSITY	1
SHANGHAI NATIONAL ACCOUNTING INSTITUTE	1
SHIJIAZHUANG TIEDAO UNIVERSITY	1
SICHUAN AGRICULTURAL UNIVERSITY	1
SICHUAN AGRICULTURE UNIVERSITY	1
SOUTH WESTERN UNIVERSITY OF FINANCE AND ECONOMICS	1
SOUTHWEST UNIVERSITY	1
SUZHOU UNIVERSITY	1
TIANJIN UNIVERSITY	1
TIANJIN UNIVERSITY OF TECHNOLOGY AND EDUCATION	1
TSINGHUA UNIVERSITY	1
UNIVERSITY OF JINAN	1
UNIVERSITY OF SCIENCE AND TECHNOLOGY OF CHINA	1
WUHAN INSTITUTE OF TECHNOLOGY	1
XIAN JIAOTONG UNIVERSITY	1
XIAN TECHNOLOGICAL UNIVERSITY	1
XIANGYA SCHOOL OF PUBLIC HEALTH CENTRAL SOUTH UNIVERSITY	1

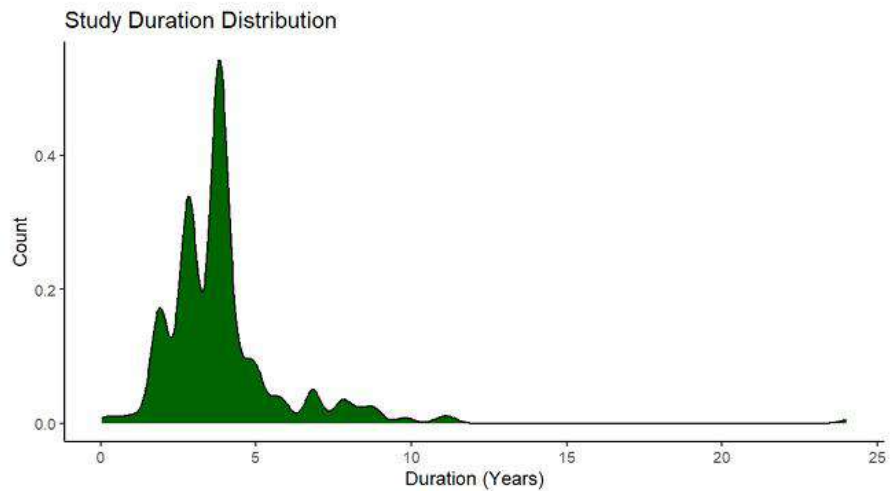
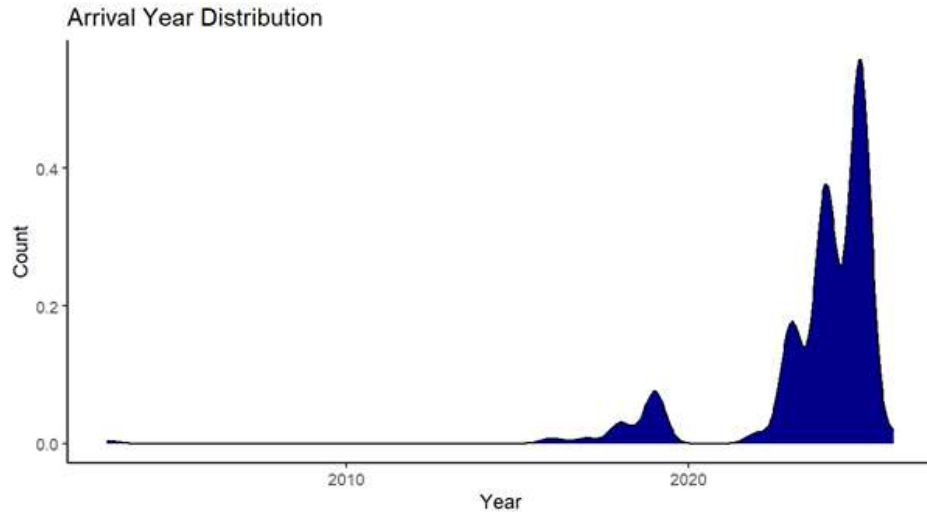
XICHANG UNIVERSITY	1
YANSHAN UNIVERSITY	1
YUNNAN UNIVERSITY OF FINANCE AND ECONOMIC	1
ZHEJIANG CHINESE MEDICAL UNIVERSITY	1
ZHEJIANG UNIVERSITY	1
ZHENJIANG CHINESE MEDICAL UNIVERSITY	1
ZJNU UNIVERSITY	1



Program Support Distribution

Program support	Count	Percentage
BILATERAL	13	3.927492447
CSC	34	10.27190332
MOFCOM	22	6.64652568
PARTIAL	57	17.22054381
SELF-SUPPORTED	69	20.84592145
UNIVERSITY SCHOLARSHIP	136	41.08761329





Statistical

Tests:

T-Test for Age Differences by Gender

We conducted a statistical test to determine whether the average (mean) age of female scholars differs significantly from that of male scholars.

1. The average age for female scholars is approximately **26.9** years.
2. The average age for male scholars is approximately **27.7** years.

Thus, female scholars are, on average, about **0.8 years younger** than their male counterparts. The central question, however, is whether this observed difference reflects a genuine pattern or is simply due to random chance.

The results of our statistical test suggest that this difference is **not statistically significant**. The p value is **0.3467**, indicating that there is a **34.7%** probability of observing an age difference of this magnitude (or larger) due to random sampling variation alone, assuming no real difference exists in the broader population. In conventional social science research, a finding is typically considered statistically significant only when this probability falls below the 5% threshold ($p < 0.05$).

Additionally, the **95%** confidence interval ranges from **-2.47 to 0.87**. This means that, based on our data, the true difference in average age between female and male scholars could plausibly be as large as females being **2.47** years younger, or males being **0.87** years younger. Because this interval includes zero (which would indicate no difference), it further confirms the absence of a statistically significant gap. Based on the membership registration and updated data, there is no statistically significant difference in age between male and female scholars. The small age gap observed in the sample is best attributed to random variation rather than a meaningful demographic pattern.

Chi-Square Test: Relationship Between County and Type of Program Support

We conducted a statistical test to determine whether a scholar's county is related to or independent of the type of program support they receive. For this analysis, we focused on the top 5 counties and the **three most common support types**: University Scholarship, Partial Support, and Self Supported.

We sought to answer: Does the distribution of program support types appear consistent across all counties, or does it vary significantly from one county to another? In other words, are program support and county independent of each other, or are they related?

Our statistical test, the **Chi-Square Test** of Independence, provides a clear answer: There is no statistically significant relationship between county and program support. The p-value for this test is **0.1624**. This value, which is well above the conventional significance threshold of **0.05**, indicates that there is a **16.2%** probability that the observed differences in program support distributions across counties could have occurred by random chance alone, even if no true relationship existed in the broader population.

Based on the combined quarters (1 to 3) data, there is no statistically significant relationship between a scholar's county and their type of program support when examining the top five counties and the three primary support categories. The observed differences in the distribution of University Scholarships, Partial Support, and Self-Supported status across counties are not strong enough to rule out random variation as a plausible explanation

Geographical Distribution Analysis

Province	County	Count	Total in province	County Percentage
JIANGSU	MONTERRADO	32	90	35.55555556
JIANGSU	LOFA	19	90	21.11111111
JIANGSU	BONG	11	90	12.22222222
JIANGSU	MARYLAND	6	90	6.66666667
JIANGSU	NIMBA	5	90	5.55555556
JIANGSU	GRAND BASSA	4	90	4.44444444
JIANGSU	GRAND KRU	3	90	3.33333333
JIANGSU	GRAND GEDEH	2	90	2.22222222
JIANGSU	MARGIBI	2	90	2.22222222
JIANGSU	SINOE	2	90	2.22222222

JIANGSU	BOMI	1	90	1.111111111
JIANGSU	GBARPOLU	1	90	1.111111111
JIANGSU	GRAND CAPE MOUNT	1	90	1.111111111
JIANGSU	RIVERCESS	1	90	1.111111111
ZHEJIANG	LOFA	7	30	23.33333333
ZHEJIANG	MONTSERRADO	7	30	23.33333333
ZHEJIANG	RIVER GEE	3	30	10
ZHEJIANG	GRAND CAPE MOUNT	2	30	6.666666667
ZHEJIANG	MARGIBI	2	30	6.666666667
ZHEJIANG	SINOE	2	30	6.666666667
ZHEJIANG	BOMI	1	30	3.333333333
ZHEJIANG	BONG	1	30	3.333333333
ZHEJIANG	GBARPOLU	1	30	3.333333333
ZHEJIANG	GRAND BASSA	1	30	3.333333333
ZHEJIANG	GRAND GEDEH	1	30	3.333333333
ZHEJIANG	MARYLAND	1	30	3.333333333
ZHEJIANG	NIMBA	1	30	3.333333333
SHANDONG	MONTSERRADO	8	28	28.57142857
SHANDONG	NIMBA	6	28	21.42857143
SHANDONG	LOFA	4	28	14.28571429
SHANDONG	BONG	3	28	10.71428571
SHANDONG	GRAND BASSA	2	28	7.142857143
SHANDONG	GRAND GEDEH	2	28	7.142857143
SHANDONG	GRAND KRU	1	28	3.571428571
SHANDONG	MARGIBI	1	28	3.571428571
SHANDONG	SINOE	1	28	3.571428571
HUNAN	MONTSERRADO	9	25	36
HUNAN	BONG	4	25	16
HUNAN	LOFA	4	25	16
HUNAN	NIMBA	3	25	12
HUNAN	SINOE	2	25	8
HUNAN	GRAND BASSA	1	25	4
HUNAN	GRAND KRU	1	25	4
HUNAN	RIVER GEE	1	25	4
HUBEI	MONTSERRADO	6	24	25
HUBEI	LOFA	4	24	16.66666667
HUBEI	GRAND BASSA	3	24	12.5
HUBEI	GRAND CAPE MOUNT	3	24	12.5
HUBEI	MARYLAND	2	24	8.333333333
HUBEI	BOMI	1	24	4.166666667
HUBEI	BONG	1	24	4.166666667
HUBEI	GRAND KRU	1	24	4.166666667
HUBEI	MARGIBI	1	24	4.166666667
HUBEI	NIMBA	1	24	4.166666667

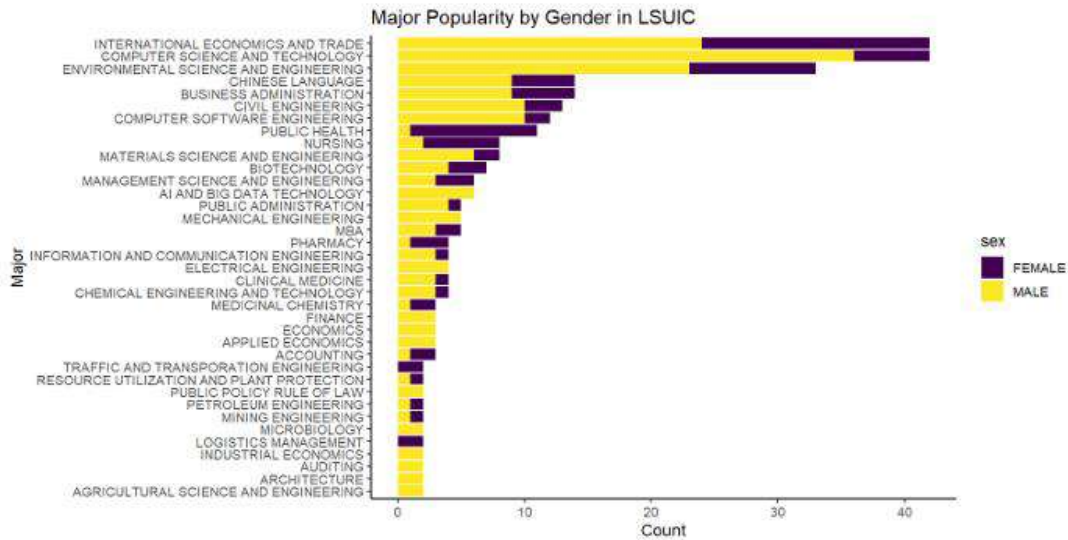
HUBEI	RIVERCESS	1	24	4.166666667
SHANGHAI	MONTERRADO	6	20	30
SHANGHAI	BONG	2	20	10
SHANGHAI	GRAND CAPE MOUNT	2	20	10
SHANGHAI	NIMBA	2	20	10
SHANGHAI	RIVERCESS	2	20	10
SHANGHAI	SINOE	2	20	10
SHANGHAI	BOMI	1	20	5
SHANGHAI	GRAND KRU	1	20	5
SHANGHAI	LOFA	1	20	5
SHANGHAI	RIVER GEE	1	20	5
GUIZHOU	MONTERRADO	6	14	42.85714286
SHAANXI	MONTERRADO	4	14	28.57142857
SHAANXI	BONG	3	14	21.42857143
SHAANXI	LOFA	3	14	21.42857143
GUIZHOU	LOFA	2	14	14.28571429
GUIZHOU	BONG	1	14	7.142857143
GUIZHOU	GRAND GEDEH	1	14	7.142857143
GUIZHOU	MARYLAND	1	14	7.142857143
GUIZHOU	NIMBA	1	14	7.142857143
GUIZHOU	RIVER GEE	1	14	7.142857143
GUIZHOU	RIVERCESS	1	14	7.142857143
SHAANXI	GRAND BASSA	1	14	7.142857143
SHAANXI	MARYLAND	1	14	7.142857143
SHAANXI	NIMBA	1	14	7.142857143
SHAANXI	SINOE	1	14	7.142857143
GUANGDONG	BONG	3	13	23.07692308
GUANGDONG	GRAND BASSA	2	13	15.38461538
GUANGDONG	GRAND CAPE MOUNT	2	13	15.38461538
GUANGDONG	LOFA	2	13	15.38461538
GUANGDONG	NIMBA	2	13	15.38461538
GUANGDONG	GRAND KRU	1	13	7.692307692
GUANGDONG	SINOE	1	13	7.692307692
SICHUAN	MONTERRADO	6	12	50
BEIJING	MONTERRADO	5	12	41.66666667
BEIJING	GRAND BASSA	2	12	16.66666667
BEIJING	MARYLAND	2	12	16.66666667
BEIJING	BONG	1	12	8.333333333
BEIJING	NIMBA	1	12	8.333333333
BEIJING	SINOE	1	12	8.333333333
SICHUAN	BOMI	1	12	8.333333333
SICHUAN	GRAND GEDEH	1	12	8.333333333
SICHUAN	LOFA	1	12	8.333333333
SICHUAN	MARYLAND	1	12	8.333333333

SICHUAN	RIVERCESS	1	12	8.333333333
SICHUAN	SINOE	1	12	8.333333333
JIANGXI	MONTERRADO	6	9	66.66666667
JIANGXI	BOMI	1	9	11.11111111
JIANGXI	GRAND BASSA	1	9	11.11111111
JIANGXI	NIMBA	1	9	11.11111111
LIAONING	MONTERRADO	3	8	37.5
HENAN	GRAND CAPE MOUNT	2	8	25
HENAN	MONTERRADO	2	8	25
HENAN	NIMBA	2	8	25
LIAONING	GRAND KRU	2	8	25
HENAN	BONG	1	8	12.5
HENAN	GRAND BASSA	1	8	12.5
LIAONING	GRAND BASSA	1	8	12.5
LIAONING	LOFA	1	8	12.5
LIAONING	NIMBA	1	8	12.5
HEILONGJIANG	BONG	1	5	20
HEILONGJIANG	GRAND BASSA	1	5	20
HEILONGJIANG	GRAND KRU	1	5	20
HEILONGJIANG	MONTERRADO	1	5	20
HEILONGJIANG	SINOE	1	5	20
JILIN	MONTERRADO	2	3	66.66666667
ANHUI	MONTERRADO	1	3	33.33333333
ANHUI	RIVER GEE	1	3	33.33333333
ANHUI	SINOE	1	3	33.33333333
JILIN	BONG	1	3	33.33333333
TIANJIN	BONG	1	3	33.33333333
TIANJIN	GBARPOLU	1	3	33.33333333
TIANJIN	LOFA	1	3	33.33333333
CHONGQING	MONTERRADO	2	2	100
HEBEI	BONG	1	2	50
HEBEI	MONTERRADO	1	2	50
ZHENJIANG	GRAND GEDEH	1	2	50
ZHENJIANG	MONTERRADO	1	2	50
FUJIAN	MONTERRADO	1	1	100
NANCHANG	MONTERRADO	1	1	100
TAIWAN	GRAND BASSA	1	1	100
YUNNAN	MARYLAND	1	1	100

Major Popularity by Gender in LSUIC

Major	Sex	Count	Total In Major
COMPUTER SCIENCE AND TECHNOLOGY	FEMALE	6	42
COMPUTER SCIENCE AND TECHNOLOGY	MALE	36	42
INTERNATIONAL ECONOMICS AND TRADE	FEMALE	18	42
INTERNATIONAL ECONOMICS AND TRADE	MALE	24	42
ENVIRONMENTAL SCIENCE AND ENGINEERING	FEMALE	10	33
ENVIRONMENTAL SCIENCE AND ENGINEERING	MALE	23	33
BUSINESS ADMINISTRATION	FEMALE	5	14
BUSINESS ADMINISTRATION	MALE	9	14
CHINESE LANGUAGE	FEMALE	5	14
CHINESE LANGUAGE	MALE	9	14
CIVIL ENGINEERING	FEMALE	3	13
CIVIL ENGINEERING	MALE	10	13
COMPUTER SOFTWARE ENGINEERING	FEMALE	2	12
COMPUTER SOFTWARE ENGINEERING	MALE	10	12
PUBLIC HEALTH	FEMALE	10	11
PUBLIC HEALTH	MALE	1	11
MATERIALS SCIENCE AND ENGINEERING	FEMALE	2	8
MATERIALS SCIENCE AND ENGINEERING	MALE	6	8
NURSING	FEMALE	6	8
NURSING	MALE	2	8
BIOTECHNOLOGY	FEMALE	3	7
BIOTECHNOLOGY	MALE	4	7
AI AND BIG DATA TECHNOLOGY	MALE	6	6
MANAGEMENT SCIENCE AND ENGINEERING	FEMALE	3	6
MANAGEMENT SCIENCE AND ENGINEERING	MALE	3	6
MBA	FEMALE	2	5
MBA	MALE	3	5
MECHANICAL ENGINEERING	MALE	5	5
PUBLIC ADMINISTRATION	FEMALE	1	5
PUBLIC ADMINISTRATION	MALE	4	5
CHEMICAL ENGINEERING AND TECHNOLOGY	FEMALE	1	4
CHEMICAL ENGINEERING AND TECHNOLOGY	MALE	3	4
CLINICAL MEDICINE	FEMALE	1	4
CLINICAL MEDICINE	MALE	3	4
ELECTRICAL ENGINEERING	MALE	4	4
INFORMATION AND COMMUNICATION ENGINEERING	FEMALE	1	4
INFORMATION AND COMMUNICATION ENGINEERING	MALE	3	4
PHARMACY	FEMALE	3	4
PHARMACY	MALE	1	4
ACCOUNTING	FEMALE	2	3
ACCOUNTING	MALE	1	3

APPLIED ECONOMICS	MALE	3	3
ECONOMICS	MALE	3	3
FINANCE	MALE	3	3
MEDICINAL CHEMISTRY	FEMALE	2	3
MEDICINAL CHEMISTRY	MALE	1	3
AGRICULTURAL SCIENCE AND ENGINEERING	MALE	2	2
ARCHITECTURE	MALE	2	2
AUDITING	MALE	2	2
INDUSTRIAL ECONOMICS	MALE	2	2
LOGISTICS MANAGEMENT	FEMALE	2	2
MICROBIOLOGY	MALE	2	2
MINING ENGINEERING	FEMALE	1	2
MINING ENGINEERING	MALE	1	2
PETROLEUM ENGINEERING	FEMALE	1	2
PETROLEUM ENGINEERING	MALE	1	2
PUBLIC POLICY RULE OF LAW	MALE	2	2
RESOURCE UTILIZATION AND PLANT PROTECTION	FEMALE	1	2
RESOURCE UTILIZATION AND PLANT PROTECTION	MALE	1	2
TRAFFIC AND TRANSPORATION ENGINEERING	FEMALE	2	2



5.7 Challenges of the National Secretariat

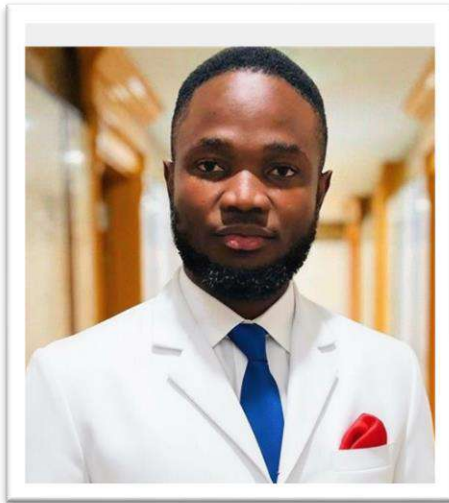
During Quarter Three, the National Secretariat encountered a range of operational constraints, largely driven by increased workload demands and the need to simultaneously manage multiple national initiatives alongside ongoing city-level support. The overlap of responsibilities and rising expectations placed pressure on available capacity, which at times limited the speed and efficiency of response to all requests.

5.8 Conclusion

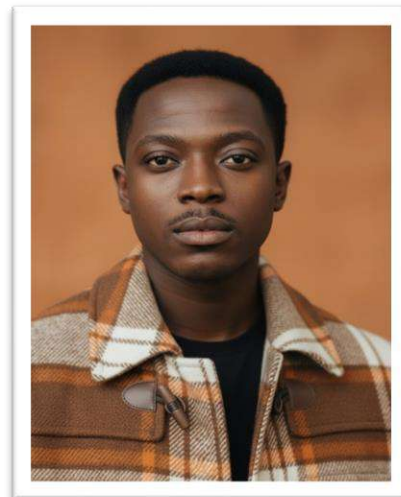
In summary, Quarter Three reflected a phase of continued advancement and strategic implementation for the National Secretariat. Through enhanced communication efforts, expanded digital engagement, intellectual initiatives, and strengthened operational support, the Secretariat further reinforced LSUIC’s institutional effectiveness and visibility. These achievements provide a strong platform for sustained development, improved coordination, and deeper engagement in the periods ahead.

Appendices

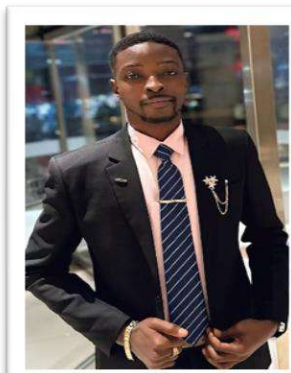
MEET MEMBERS OF THE NATIONAL SECRETARIAT



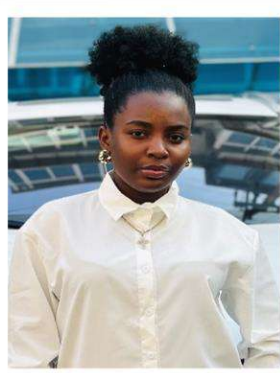
Hon. C Nathaniel Willie II
National Secretary General



Hon. Jenkins G. Wilson
National Deputy Secretary General



Hon. Eugene Sulonteh Bono
Secretary General
Wuhan



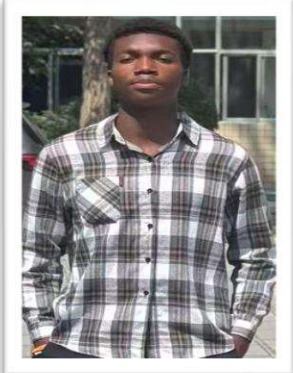
Hon. Lawrina Varney
Secretary General
Jinan



Hon. Bathsheba Howelley
Secretary General
Beijing



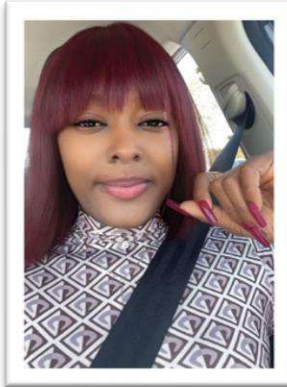
Hon. Abraham Dixon
Secretary General
Shanghai



Hon. Robert Mbaku
Secretary General
Shaanxi



Hon. Omankar Harris
Secretary General
Nantong



Hon. Gabrielyn P. Kemokai
Secretary General
Zhengzhou



Hon. Jonathan J.S. Luciny Jr.
Secretary General
Hangzhou



Hon. Sumo Blama Weefar
Secretary General
Huai'an



Hon. T Johnson Yarkpawolo
Secretary General
Zhejiang



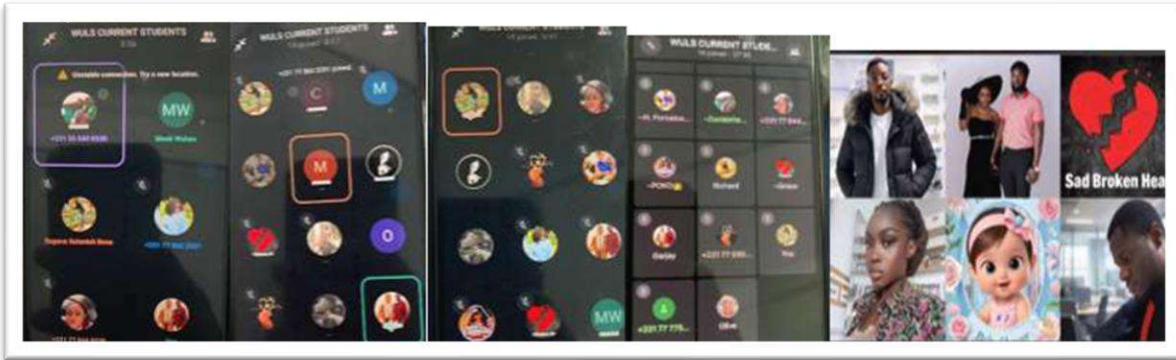
Enssah Fayia Momoh
Secretary General
Suzhou

Pictorials from City Activities

Zhenjiang City



Wuhan City



Suzhou City



Changchun City



Ningbo City



Xuzhou City



Signed: 

Office of the National Secretariat
LSUIC-2025-2026